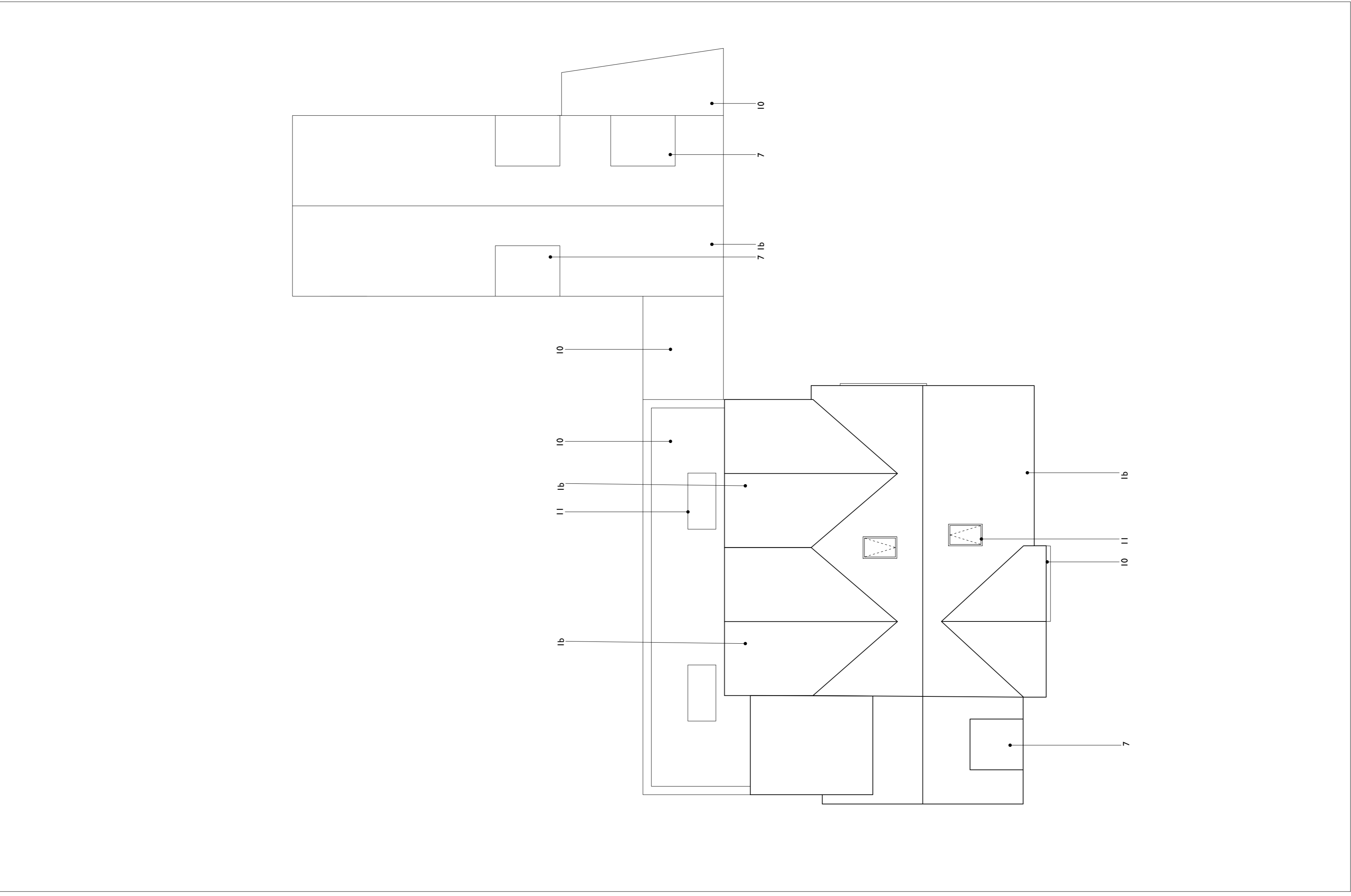


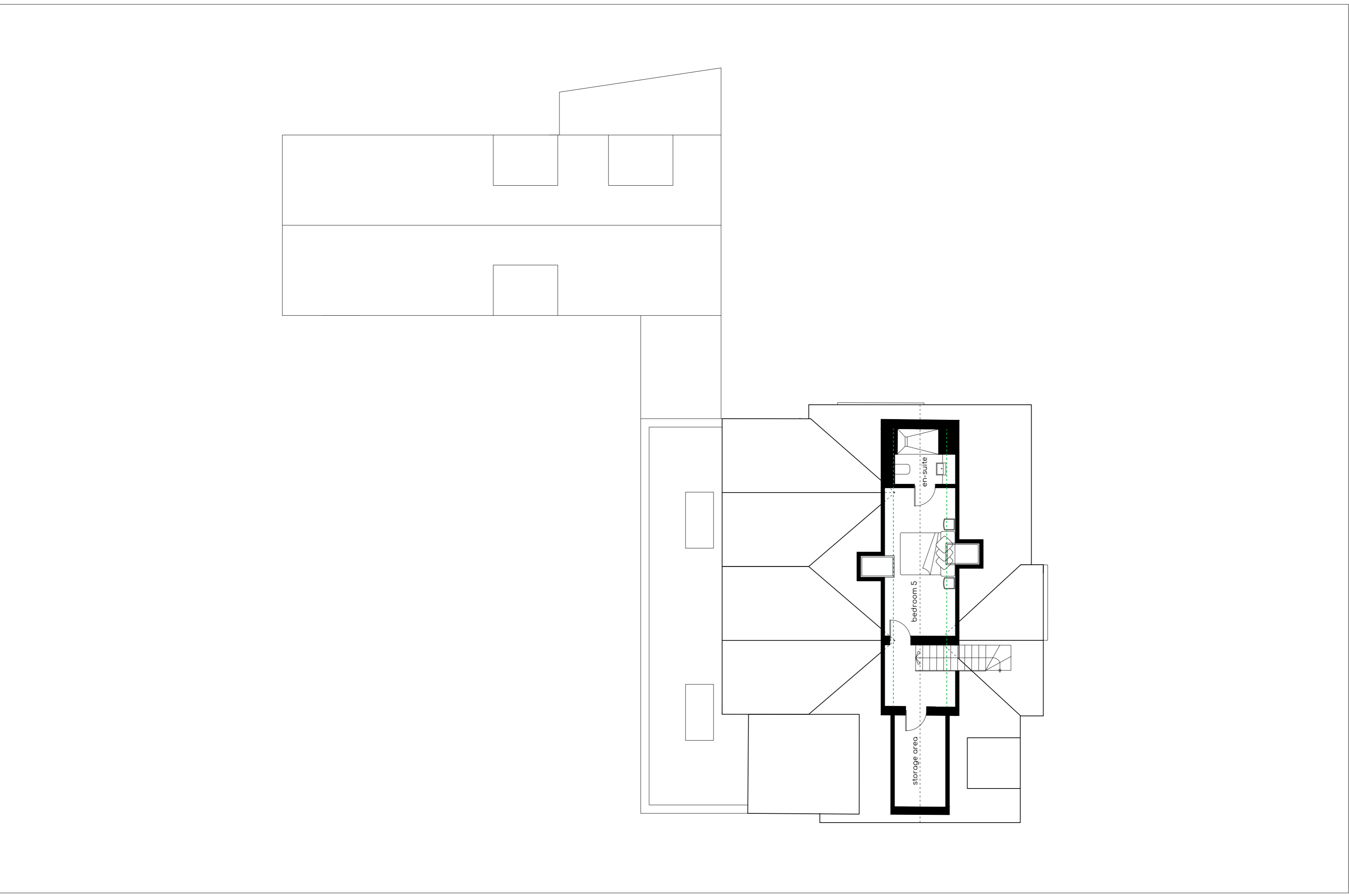
DISCLAIMER
 1. All rights reserved. © Blunn Architects 2023. No unauthorised reproduction of any part of this drawing.
 2. No dimensions to be used for construction.
 3. This drawing is for information only and does not constitute an offer of any service. Blunn Architects is not liable for any loss or damage, including consequential loss, arising from the use of this drawing. Blunn Architects is not responsible for any errors or omissions in this drawing. Blunn Architects is not responsible for any loss or damage, including consequential loss, arising from the use of this drawing. Blunn Architects is not responsible for any errors or omissions in this drawing.
 4. This drawing is for information only and does not constitute an offer of any service. Blunn Architects is not liable for any loss or damage, including consequential loss, arising from the use of this drawing. Blunn Architects is not responsible for any errors or omissions in this drawing. Blunn Architects is not responsible for any loss or damage, including consequential loss, arising from the use of this drawing. Blunn Architects is not responsible for any errors or omissions in this drawing.

Notes:

- Key**
- 1a existing clay roof tiles
 - 1b proposed slate
 - 2 grey facing brickwork
 - 3 vertical timber cladding
 - 4 white render
 - 5 Dark grey flashing / coping
 - 6 Dark grey aluminium windows
 - 7 Dark grey aluminium cladding panels
 - 8 timber finish
 - 9 stone/concrete capping
 - 10 flat roof
 - 11 rooflight
 - 12 black painted bargeboard
 - 13 PVC windows & doors



01 Proposed Second Floor Plan 1:100



02 Proposed Roof Plan 1:100

FOR PLANNING

NO.	DATE	DESCRIPTION	BY	CHKD
1	10/01/2023	FOR PLANNING		

BLUNN. ARCHITECTS

Forward Studio
 Church Lane
 Winchester
 SO22 4JT

mail@blunnarchitects.com
 t: 01982 275025
 07977 148516

Sunnyside House
 Ampfield Hill, Romsey

Proposed Second & Roof Plans
 Scale 1:100 @ A1 / 1:200 @ A3

P1069-A-PLN-211-A